

WallScreen Deluxe

Fixed Frame, Snap Screens with Various Framing Options



Stewart
F I L M S C R E E N

The Reference for Stunning™

Contents

Major Components	3
Mounting – EZ Mount G2	4
Mounting – Wall Board Mount	6
Mounting – Aperture Mount	8
Mounting – Eyebolt Mount	10
Mounting – T-Stands	11
Typical Screen Sizes and Dimensions	13
Typical Shipping Dimensions	16

Major Components

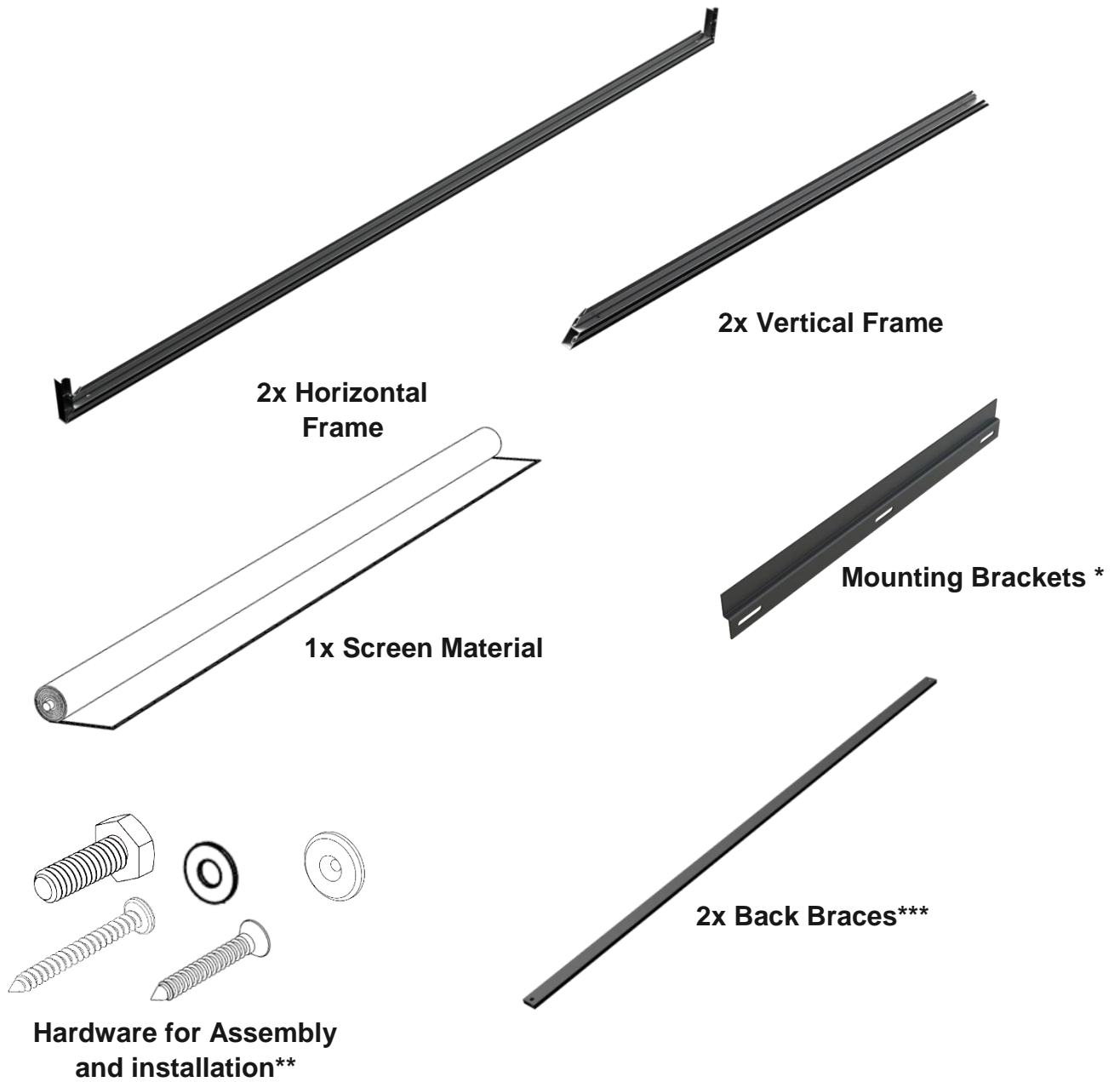


Figure 1: Renders of Wallscreen Deluxe frame pieces, mounts, and hardware. Renders are not to scale.

*Standard mount shown. Your options may vary.

**For frame assembly instructions, please refer to full Owner's Manual.

*** Not all models will require back braces. See your quote for details.

Mounting – EZ Mount G2

EZ Mount G2 is a new take on an old classic. Now featuring a sturdy bent sheet metal design, the EZ mount is now stronger and easier to use. If equipped, you will receive two to three mounts at eighteen inches in length, pre drilled on a sixteen inch center.

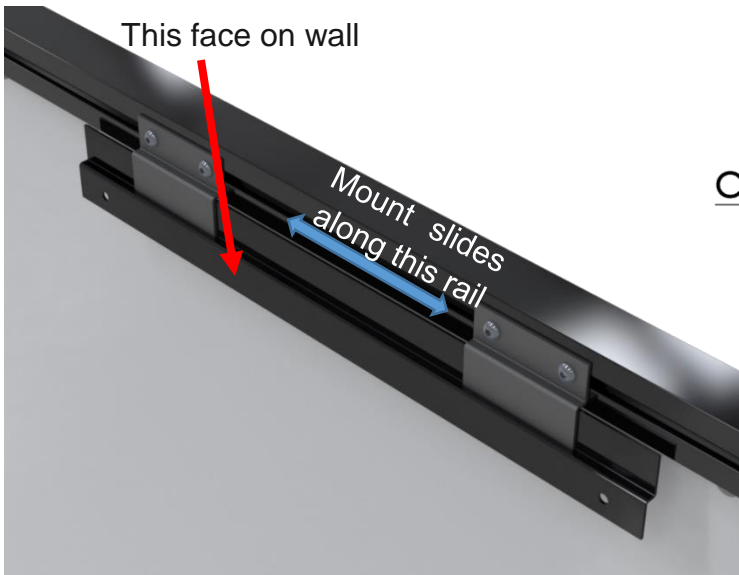


Figure 2: Render of EZ Mount G2 showcasing sliding ability along frame rail.

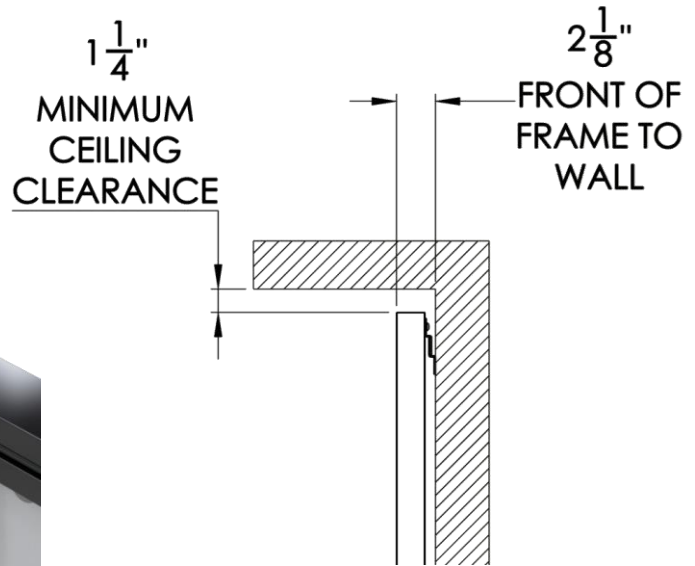


Figure 3: Side view profile drawing showcasing WSDQ frame minimum ceiling clearance dimension when equipped with EZ Mount G2.

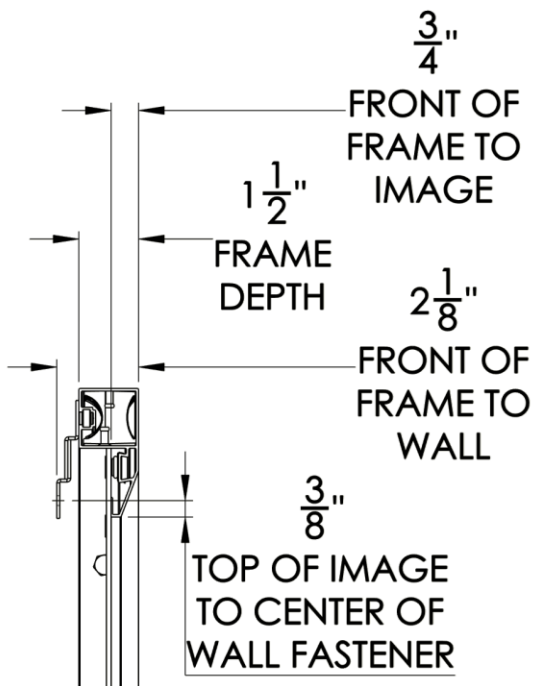


Figure 4: Side view drawing of WSDQ with EZ Mount G2 showing vital dimensions of bracket that goes to wall.

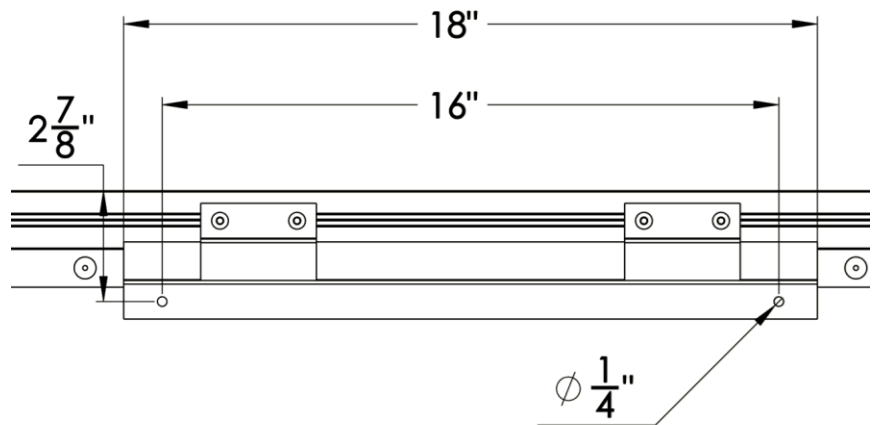


Figure 5: Rear view drawing of WSDQ with EZ Mount G2 showing vital dimensions of bracket that goes to wall.



Figure 6: Side view render of WSDQ showing action needed to mount frame to wall mounted bracket.



Figure 7: Side view render of WSDQ mounted on wall showing engagement of EZ Mount G2 bracketry.

Mounting – Wall Board Mount

If overall depth is not a concern, wall board mount can be used to secure your screen to the wall in a sturdy manner. Like the EZ Mount, the wall board mount can slide left and right along the frame rail to accommodate any stud spacing.

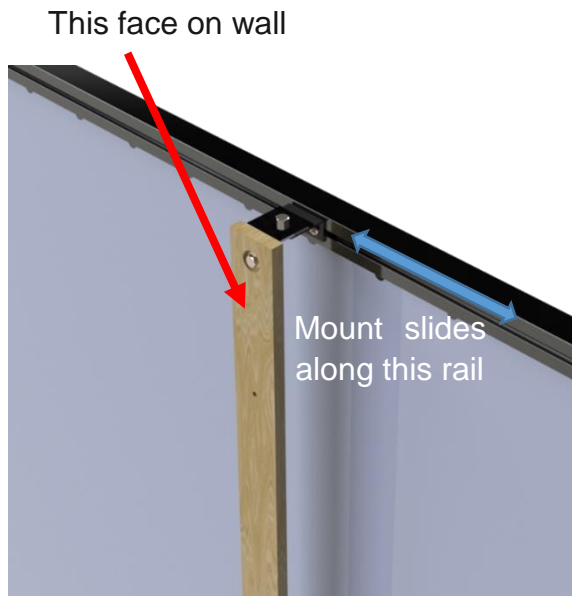


Figure 8: Render of WSDQ and wallboard mount showing wood of wallboard and sliding ability. Note: screws can be used to mount on any part of wallboard mount.

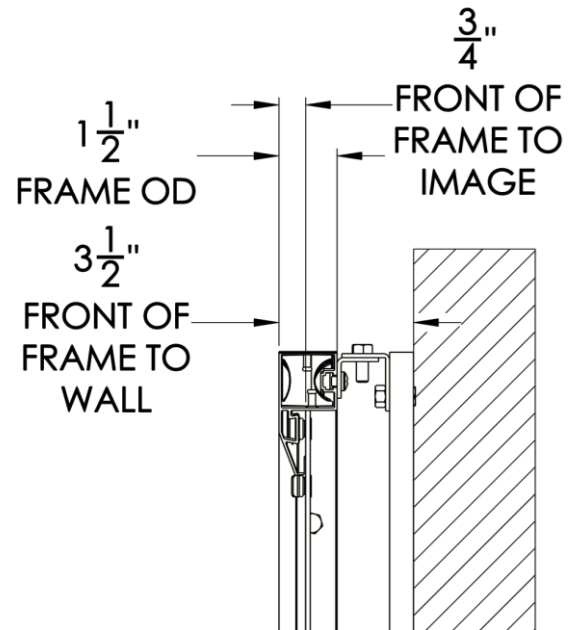


Figure 9: Side view profile drawing of WSDQ showing overall depth of frame when mounted to wall.

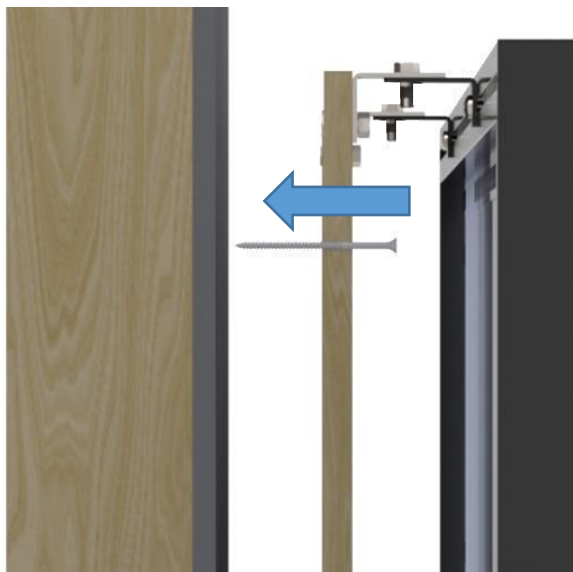


Figure 10: Side view render of WSDQ showing action needed to mount frame to wall with wallboard and screw.

Figure 9 NOTE: Make sure that when installing the frame to the wall for the first time, that you first raise the frame to the wall to do a “dry-fit” with no screen material installed. Once you’ve located the correct spot where your WSDQ frame will fit, drive your deck screws through the wall board. Once it is fully mounted, removed the fasteners for the frame on top and bottom from the wall board assembly and install the screen material. Assemble frame back onto wallboards to finish the install.



Figure 11: Side view render of WSDQ showing full mounted frame.

Mounting – Aperture Mount

Aperture mount is for those whom may want to mount their screen flush to the wall within a cavity inside the wall. This option allows a very clean professional look to the overall screen setup. Do note, you must have access to the rear of the screen for install.

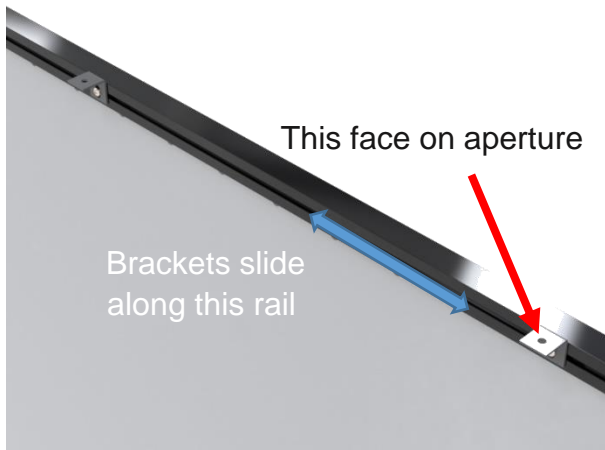


Figure 12: Render of WSDQ and aperture mount brackets and sliding ability.

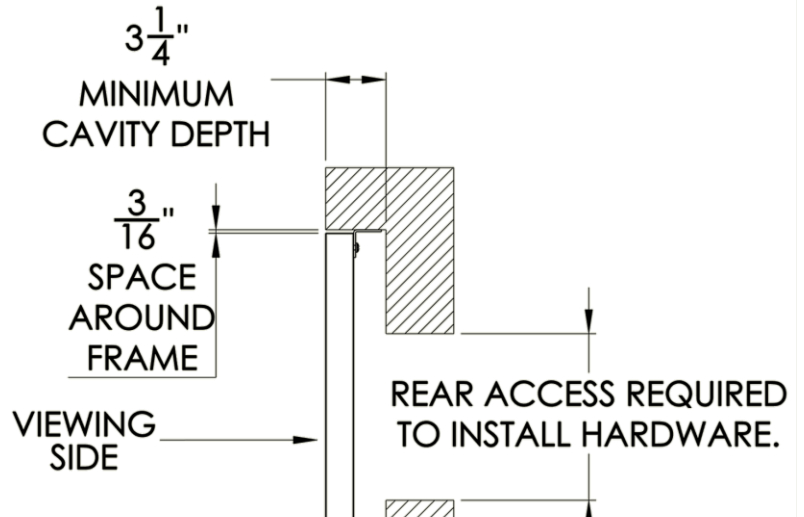


Figure 13: Side view profile drawing of WSDQ showing overall depth and OD size of aperture needed to mount the frame.

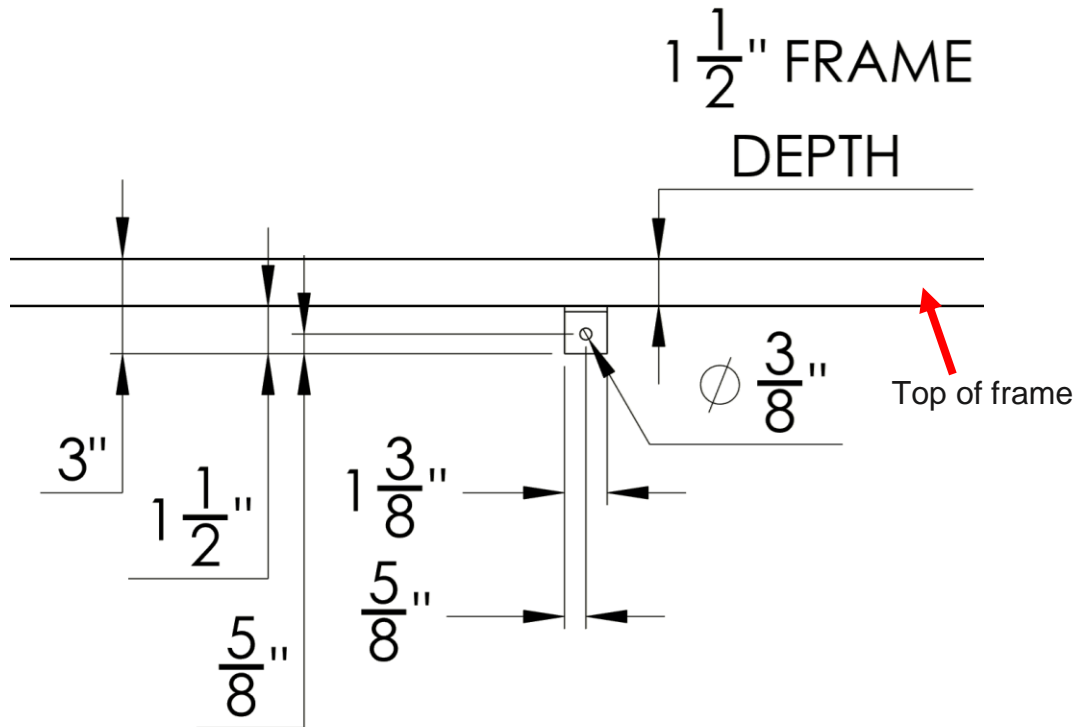


Figure 14: Top view drawing detail showing critical dimensions of aperture mount bracket.

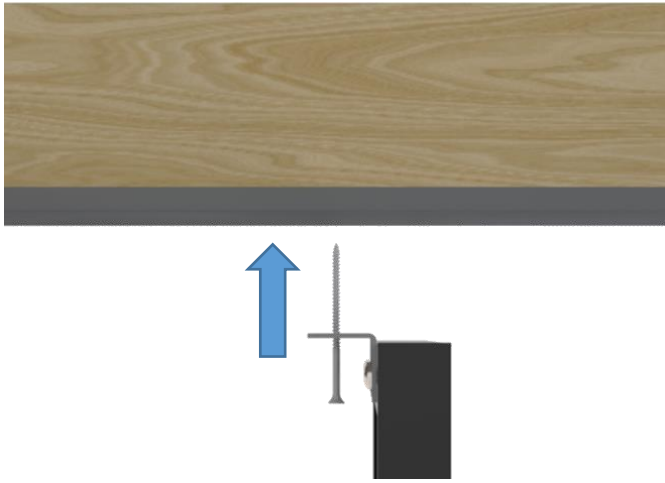


Figure 15: Side view profile render of WSDQ showing action needed to install bracket with frame to aperture.

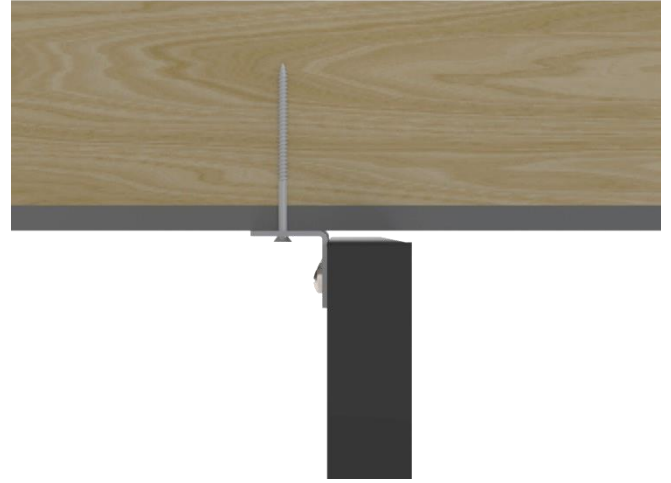


Figure 16: Side view profile render of WSDQ showing a fully installed frame with aperture mount.

Mounting – Eyebolt Mount

Eyebolt, or sometimes commonly called “stage-fly” mount, is a great solution for installations in places like museums or other exhibits where you may need to have the screen in location for a set amount of time. Eyebolts do not move on top of frame so please be sure to specify where they need to be during quoting.

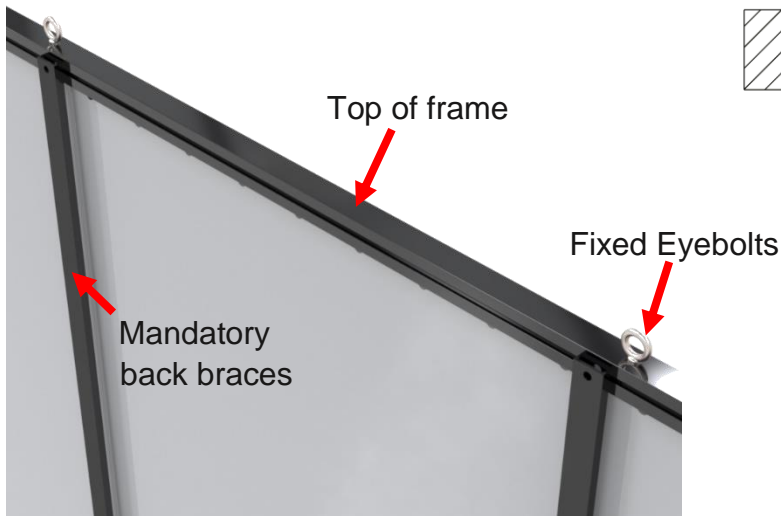


Figure 17: Render of WSDQ with fixed eyebolts and back braces. *Eyebolt position and amount is determined in the quoting stage to accommodate your installation.*

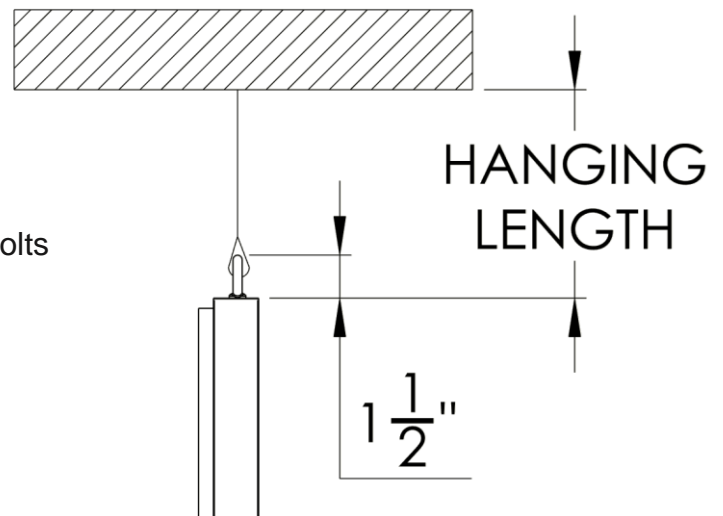


Figure 18: Side view profile drawing of WSDQ showing overall height of eyebolt. *Hanging length will be specific to your installation and not part of the Stewart Filmscreen mounting system.*

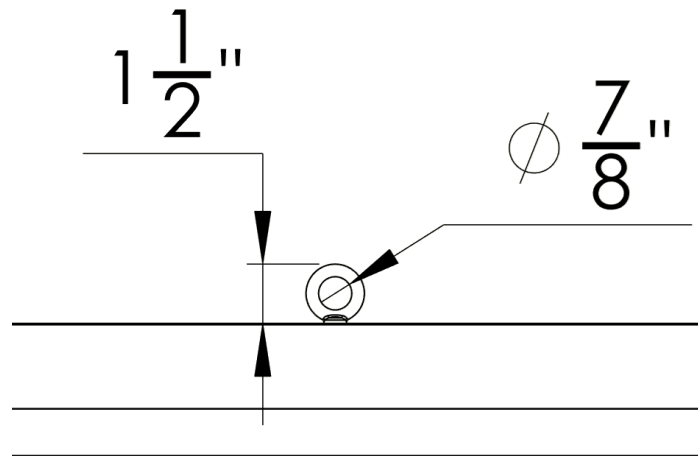


Figure 19: Front view detail drawing showing eyebolt size.

Mounting – T-Stands

T-Stands are the perfect mount for those looking to make a quick setup for presentations, impromptu outdoor movie screenings, or in case you are unable to mount to a wall or ceiling. The T-Stands install quickly by means of two threaded knobs on the rear of T-Stand/Frame.

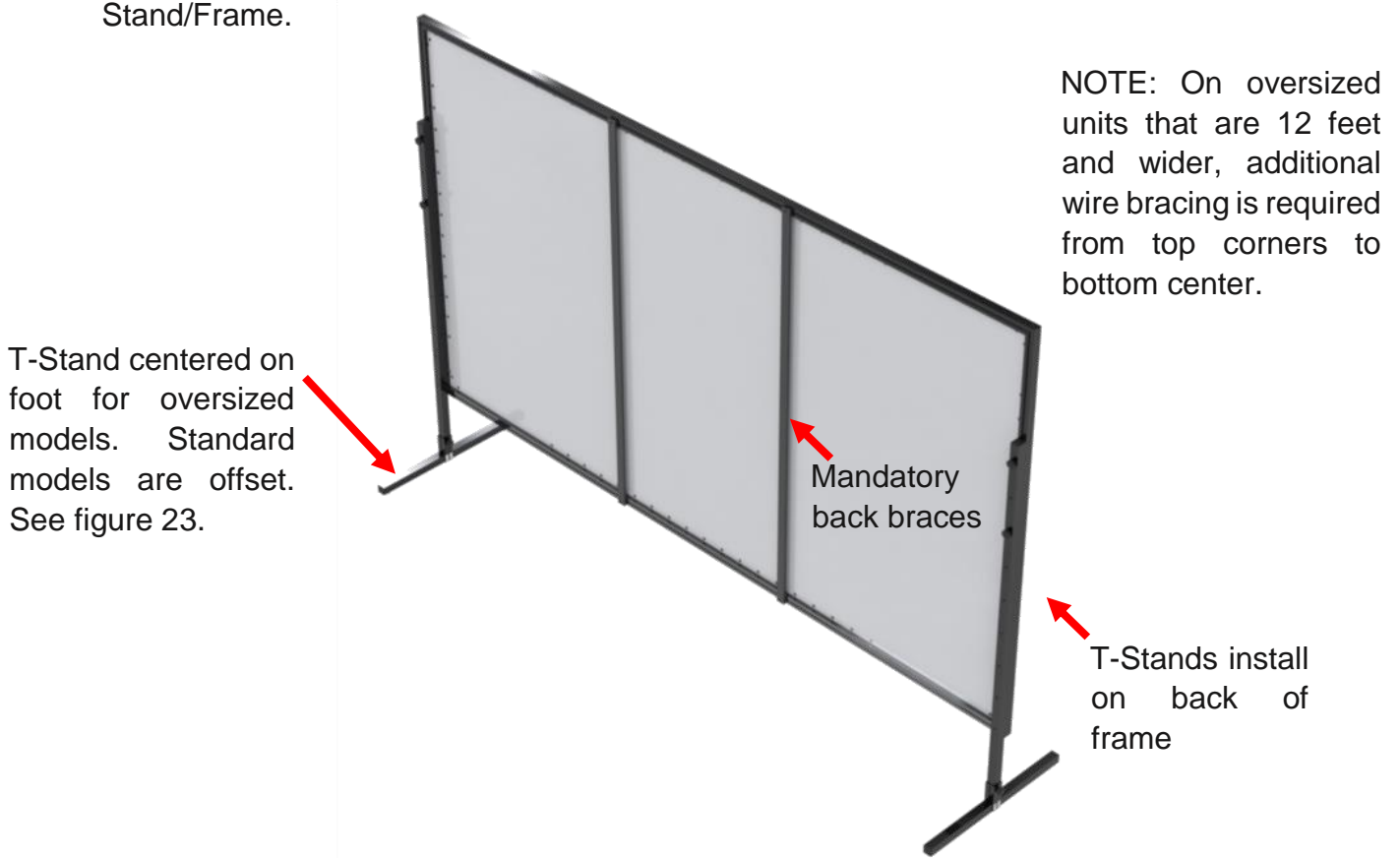


Figure 20: Rear isometric view showing t-stands installed with back braces.



Figure 21: Render of WSDQ with t-stands. T-stands are installed by way of threaded knobs that allow to adjust frame height.



Figure 22: Render of WSDQ with t-stands fully installed.

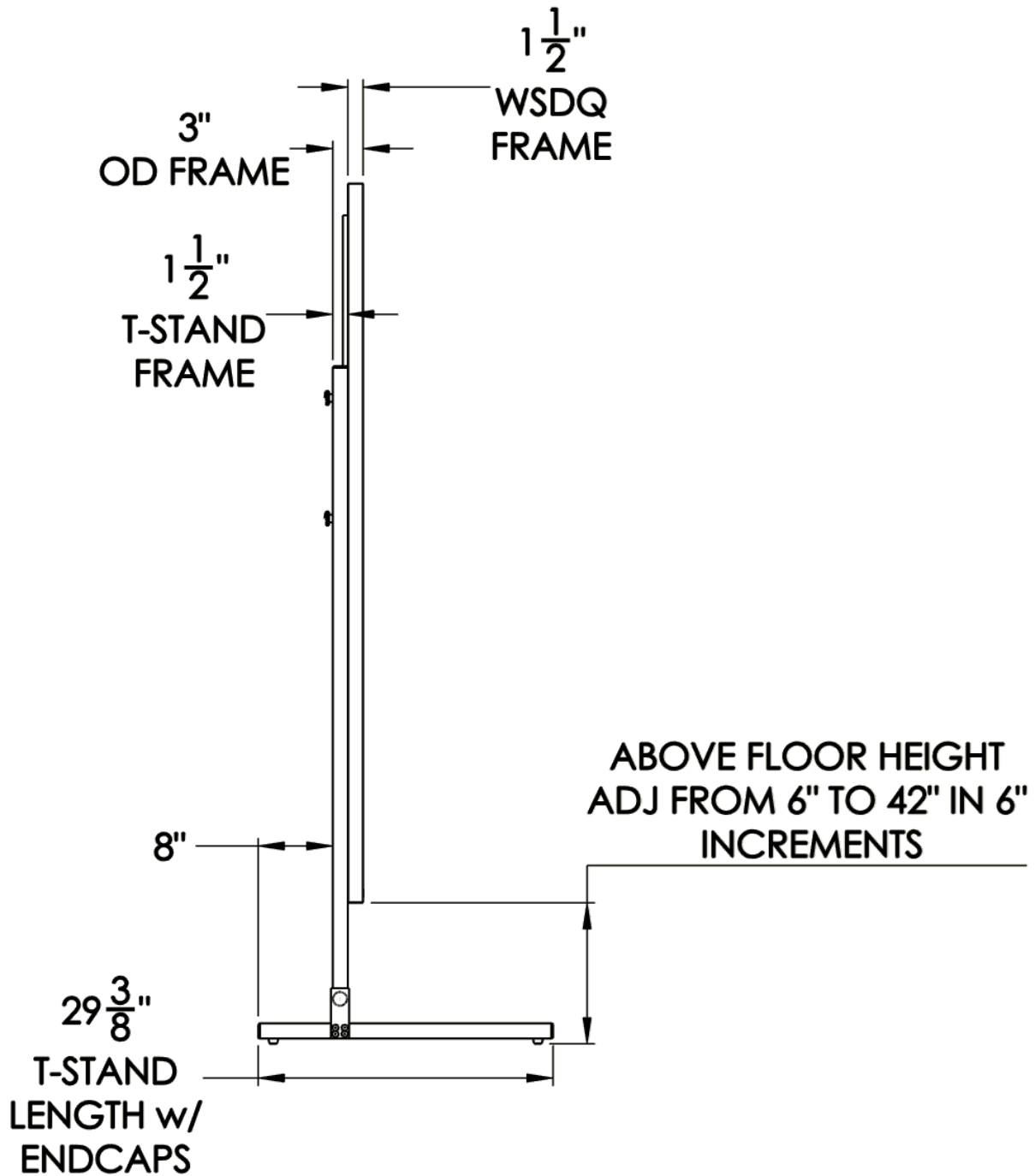


Figure 23: Side view profile drawing of WSDQ showing overall frame thickness with t-stand and overall t-stand depth.

Typical Screen Sizes and Dimensions

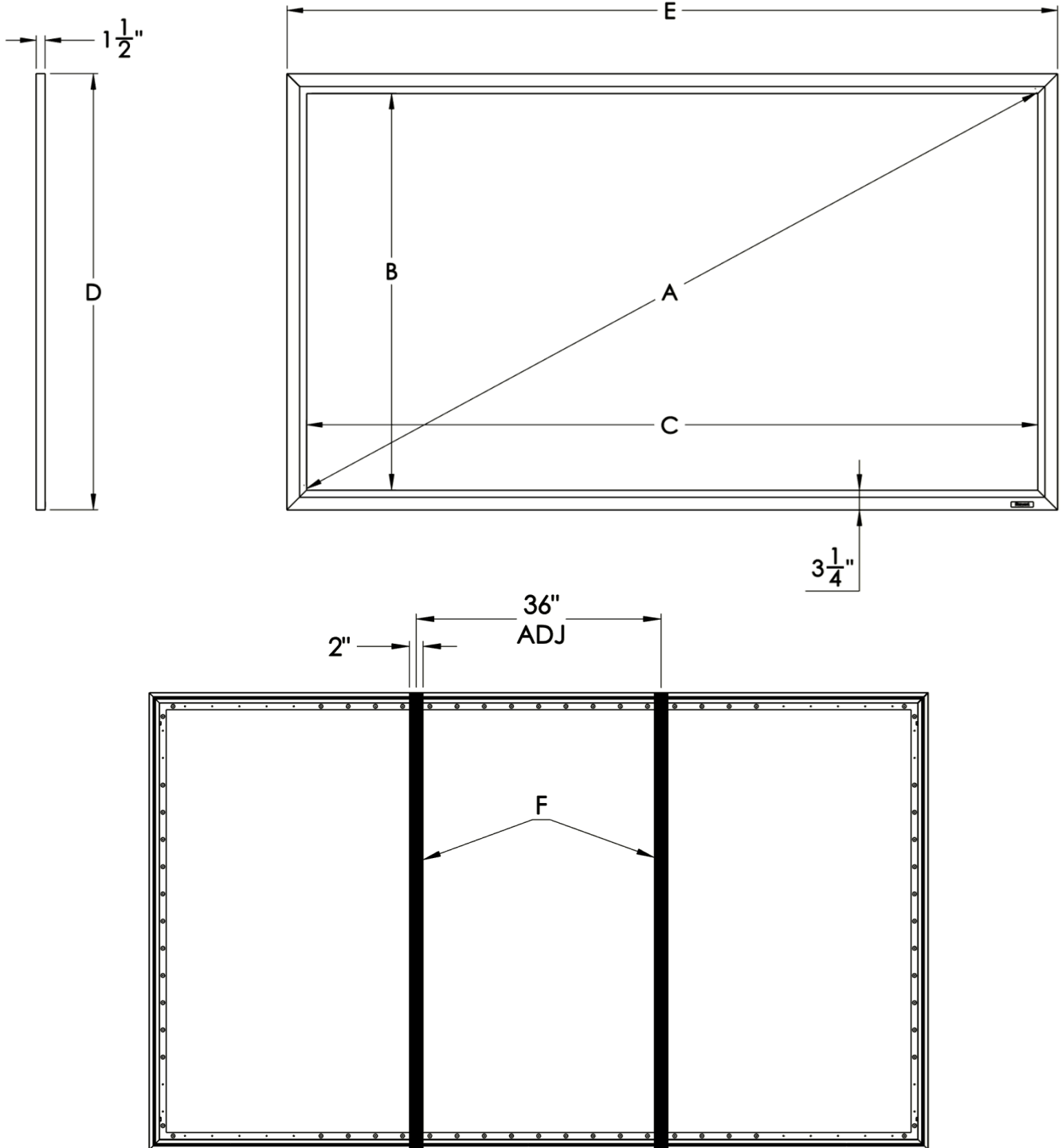


Figure 24: Basic front, side, and back view drawing with letters for dimensions. See tables below for appropriate aspect ratio and dimensions. Frame Width dimension does not include back brace or mounting.

16:9 Aspect Ratio

Diagonal (A)	Image Height (B)	Image Width (C)	Overall Height (D)	Overall Width (E)	Back Brace Count (F)	Screen Weight
100"	49"	87"	55.625"	93.625"	N/A	31 lbs
110"	54"	96"	60.625"	102.625"	N/A	35 lbs
120"	58.75"	104.5"	65.375"	111.125"	2x	38 lbs
123"	60"	107"	66.625"	113.625"	2x	39 lbs
133"	65.25"	116"	71.875"	122.625"	2x	42 lbs
135"	66"	118"	72.625"	124.625"	2x	43 lbs
150"	73.5"	130.75"	80.125"	137.375"	2x	48 lbs
160"	78.25"	139.5"	84.875"	146.125"	2x	51 lbs
180"	88.25"	157"	94.875"	163.625"	2x	58 lbs
200"	98"	174.25"	104.625"	180.875"	2x	66 lbs

16:10 Aspect Ratio

Diagonal (A)	Image Height (B)	Image Width (C)	Overall Height (D)	Overall Width (E)	Back Brace Count (F)	Screen Weight
94"	50"	80"	56.625"	86.625"	N/A	30 lbs
109"	57.5"	92.5"	64.125"	99.125"	N/A	34 lbs
123"	65"	104"	71.625"	110.625"	2x	39 lbs
137"	72.5"	116"	79.125"	122.625"	2x	44 lbs
164"	87"	139"	93.625"	145.625"	2x	53 lbs

2.4:1 Aspect Ratio

Diagonal (A)	Image Height (B)	Image Width (C)	Overall Height (D)	Overall Width (E)	Back Brace Count (F)	Screen Weight
120"	46.25"	111"	52.875"	117.625"	2x	37 lbs
125"	48.375"	116"	55"	122.625"	2x	39 lbs
133"	51.25"	123"	57.875"	129.625"	2x	41 lbs
138"	53.375"	128"	60"	134.625"	2x	43 lbs
140"	54.125"	130"	60.75"	136.625"	2x	44 lbs
144"	55.375"	133"	62"	139.625"	2x	45 lbs
150"	57.875"	139"	64.5"	145.625"	2x	47 lbs
153"	59.125"	142"	65.75"	148.625"	2x	48 lbs
158"	60.875"	146"	67.5"	152.625"	2x	49 lbs
168"	64.625"	155"	71.25"	161.625"	2x	53 lbs
176"	67.875"	163"	74.5"	169.625"	2x	56 lbs

2.35:1 Aspect Ratio

Diagonal (A)	Image Height (B)	Image Width (C)	Overall Height (D)	Overall Width (E)	Back Brace Count (F)	Screen Weight
120"	47.25"	111"	53.875"	117.625"	2x	37 lbs
125"	49"	115"	55.625"	121.625"	2x	39 lbs
130"	51.125"	120"	57.75"	126.625"	2x	40 lbs
133"	52"	122.25"	58.625"	128.875"	2x	41 lbs
138"	54"	127"	60.625"	133.625"	2x	43 lbs
140"	54.875"	129"	61.5"	135.625"	2x	44 lbs
144"	56.625"	133"	63.25"	139.625"	2x	45 lbs
150"	58.75"	138"	65.375"	144.625"	2x	47 lbs
153"	60"	141"	66.625"	147.625"	2x	48 lbs
158"	62.125"	146"	68.75"	152.625"	2x	49 lbs
168"	66"	155"	72.625"	161.625"	2x	53 lbs
176"	68.875"	162"	75.5"	168.625"	2x	56 lbs

Typical Shipping Dimensions

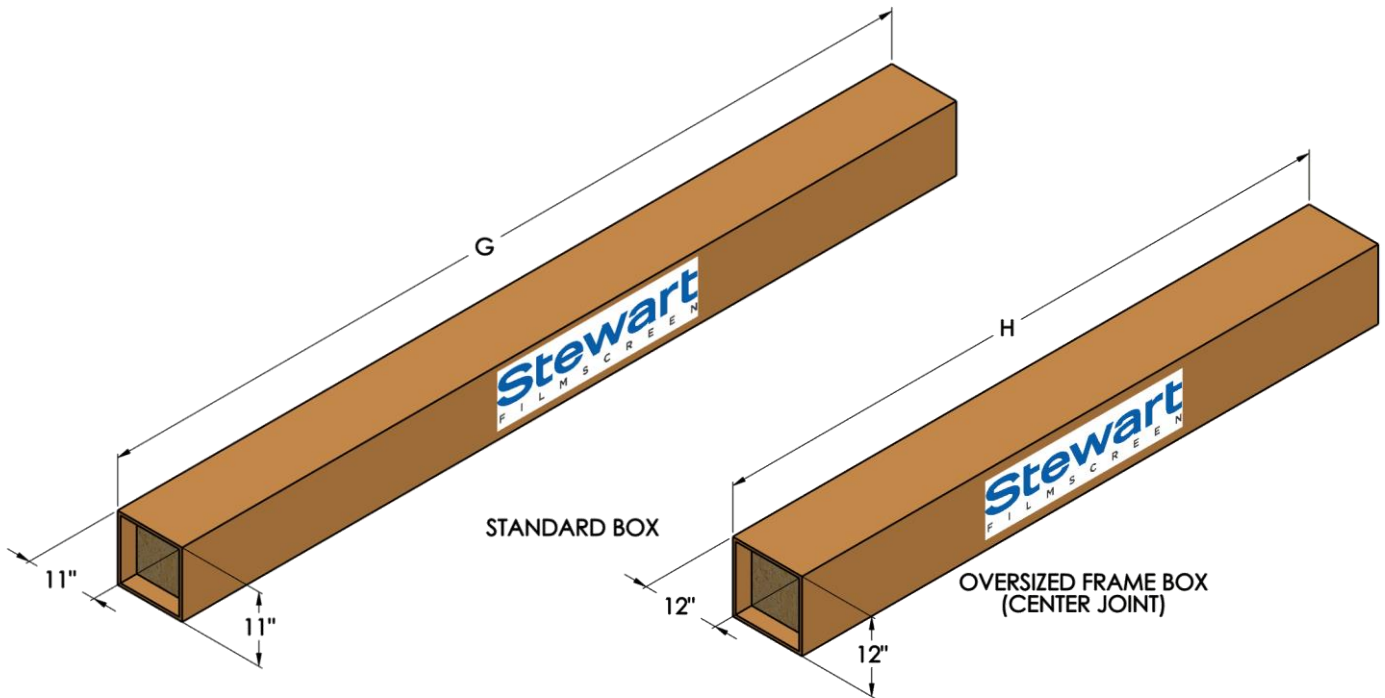


Figure 25: Isometric renders of shipping boxes with letters for dimensions. See tables below for appropriate aspect ratio and dimensions.

16:9 Aspect Ratio

Diagonal	Overall Frame Width	Screen Weight	Shipping Length (G)	Shipping Weight	Oversized Frame Box Length (H)	Shipping Weight
100"	93.625"	31 lbs	100.375"	55 lbs		
110"	102.625"	35 lbs	109.375"	61 lbs		
120"	111.125"	38 lbs	118"	67 lbs		
123"	113.625"	39 lbs	120.375"	69 lbs		
133"	122.625"	42 lbs	129.375"	75 lbs		
135"	124.625"	43 lbs	131.375"	77 lbs		
150"	137.375"	48 lbs	144.125"	85 lbs		
160"	146.125"	51 lbs	153"	92 lbs		
180"	163.625"	58 lbs			100.25"	107 lbs
200"	180.875"	66 lbs			110"	123 lbs

16:10 Aspect Ratio

Diagonal	Overall Frame Width	Screen Weight	Shipping Length (G)	Shipping Weight	Oversized Frame Box Length (H)	Shipping Weight
94"	86.625"	30 lbs	93.375"	51 lbs		
109"	99.125"	34 lbs	105.875"	60 lbs		
123"	110.625"	39 lbs	117.375"	68 lbs		
137"	122.625"	44 lbs	129.375"	77 lbs		
164"	145.625"	53 lbs	152.375"	94 lbs		

2.4:1 Aspect Ratio

Diagonal	Overall Frame Width	Screen Weight	Shipping Length (G)	Shipping Weight	Oversized Frame Box Length (H)	Shipping Weight
120"	117.625"	37 lbs	124.375"	68 lbs		
125"	122.625"	39 lbs	129.375"	72 lbs		
133"	129.625"	41 lbs	136.375"	76 lbs		
138"	134.625"	43 lbs	141.375"	80 lbs		
140"	136.625"	44 lbs	143.375"	81 lbs		
144"	139.625"	45 lbs	146.375"	83 lbs		
150"	145.625"	47 lbs	152.375"	87 lbs		
153"	148.625"	48 lbs	155.375"	89 lbs		
158"	152.625"	49 lbs			72.875"	92 lbs
168"	161.625"	53 lbs			76.625"	100 lbs
176"	169.625"	56 lbs			79.875"	107 lbs

2.35:1 Aspect Ratio

Diagonal	Overall Frame Width	Screen Weight	Shipping Length (G)	Shipping Weight	Oversized Frame Box Length (H)	Shipping Weight
120"	117.625"	37 lbs	124.375"	69 lbs		
125"	121.625"	39 lbs	128.375"	71 lbs		
130"	126.625"	40 lbs	133.375"	74 lbs		
133"	128.875"	41 lbs	135.625"	76 lbs		
138"	133.625"	43 lbs	140.375"	79 lbs		
140"	135.625"	44 lbs	142.375"	80 lbs		
144"	139.625"	45 lbs	146.375"	83 lbs		
150"	144.625"	47 lbs	151.375"	87 lbs		
153"	147.625"	48 lbs	154.375"	89 lbs		
158"	152.625"	49 lbs			74.125"	92 lbs
168"	161.625"	53 lbs			78"	100 lbs
176"	168.625"	56 lbs			80.875"	106 lbs